



**RUTENBECK**

New Products 2024

RUTENBECK FIBRE

RUTENBECK DATA

RUTENBECK CONTROL

RUTENBECK MEDIA

RUTENBECK PHONE

Direct successor to UM-Cat.8.1/Class I 40/10G | Art. 13900308



#### Key facts

- Proven design
- connection without special tools
- Fits all Keystone adapters
- use in 40/25/10GB networks
- environmentally friendly cardboard packaging

The new Cat.8.1 universal module has been specially developed for use in 40 Gigabit Ethernet networks and offers a transmission bandwidth of up to 2000 MHz. It is backwards compatible throughout and is also suitable for use in 25 and 10 Gigabit Ethernet networks. The module fits into standard keystone openings and can therefore be used in a variety of installation situations. This makes it an ideal choice for modern network requirements.

40 GB universal module, shielded, for standard Keystone module cut-outs  
UM-Cat.8.1/Class I 40/25/10G  
Art. 13900306

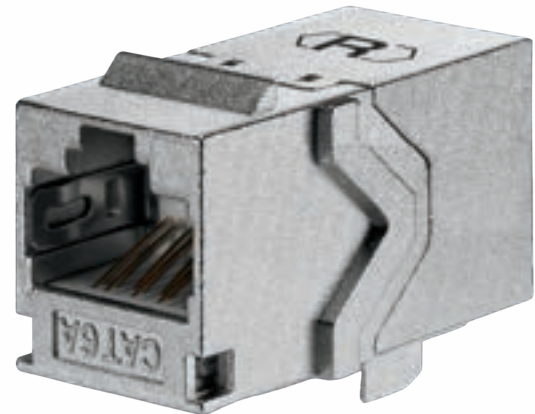
For use in plug & play network applications, the new feed-through coupling meets the requirements of Category 6A with data rates of up to 10 gigabits and a transmission bandwidth of up to 500 MHz. PoE+ applications up to 30 W are also no problem. The coupling with two RJ45 plug-in openings is suitable for standard keystone mounting adapters and can be easily integrated into almost all installation environments.

10GB feed-through coupling, straight  
RJ45 Kupplung 10G  
Art. 13900361

#### Key facts

- short design made of die-cast zinc
- universal Keystone format
- simple plug & play
- 10 Gbit/s with full PoE+ capability
- 750 mating cycles
- Environmentally friendly cardboard packaging

Direct successor to Cat.6 coupling | Art. 13900360



Direct successor to Cat.6 right-angle coupler | Art. 13900370



Similar to the feed-through coupler, the angled coupler also fits into most Keystone mounting adapters. The arrangement of the two RJ45 sockets at a 90° angle can offer advantages when feeding the patch cables, particularly in confined environments. Of course, this version also has no restrictions in terms of data rate and bandwidth (10 Gbit/s at 500 MHz) or PoE+ suitability up to 30 W.

10GB right-angle coupler, 90° angled  
RJ45-Winkelkupplung 10G  
Art. 13900371

#### Keyfacts

- universal Keystone format
- simple plug & play
- ideal for tight spaces with 90° outlet
- 10 Gbit/s with full PoE+ capability
- Environmentally friendly cardboard packaging

For retrofitting to Cat.6A iso 25/10G universal modules, Art. 13900310 and Cat.8.1/ClassI 40/25/10G universal modules, Art. 13900306.

Item number	Designation
13910301	SSK sw
13910302	SSK rw
13910303	SSK rot
13910304	SSK gelb
13910305	SSK blau
13910306	SSK grün



## Cover plates and labeling strips

Item number	Designation
13500042	ZSt 55 UAE 8 ws
13500043	ZSt 55 UAE 8/8 ws
13500062	ZSt 55 UAE 8 gr
13500063	ZSt 55 UAE 8/8 gr
13910043	ZSt 55 UM-MA 2 ws
13910063	ZSt 55 UM-MA 2 gr

Item number	Designation
10000041	AP 55 1 ws
10000042	AP 55 2 ws
10000061	AP 55 1 gr
10000062	AP 55 2 gr
10000090	BST AP 55







New normative requirements from the application areas of renewable energies and electromobility, as well as the transmission of tariff and consumption information, require new solutions for integration into the home network and the Internet. The new REG feed-through coupling is aimed precisely at these applications. It offers a simple plug & play solution with an RJ45 interface for installation in the connection area of the meter or in corresponding additional fields of the sub-distribution board. After installation on the DIN rail, it is protected against tampering due to its low height when installed. Like all Rutenbeck couplings, this REG variant also meets all modern transmission requirements (10 Gbit/s at 500 MHz) and is suitable for PoE+ up to 30 W.

10GB feed-through coupling, straight, REG mounting below the distribution cover, 1 TE (approx. 18 mm) wide, suitable for PoE+ in accordance with IEEE 802.3at, insulation class I or II

ClassEA-Kupplung REG  
Art. 13910261

The simple plug & play solution for...

- the connection of photovoltaics or e-mobility
- the connection of meters (EHZ)
- communication technology in the home
- Connections in the sub-distribution board for retrofitting/conversion

Rutenbeck patch cables with an increased dielectric strength of up to 6 kV meet the normative requirements within the sub-distribution / at the meter location in addition to the feed-through coupling REG.

Patch cable 10 GB, shielded, dielectric strength > 6 kV

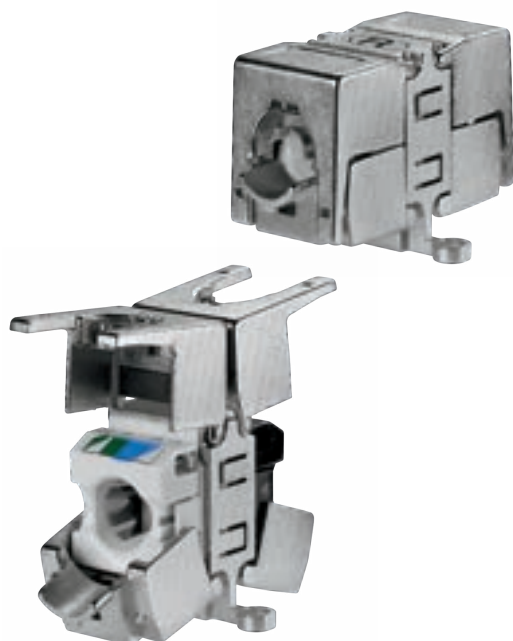
PK Cat.6A iso U 6kV HF 1.0 m bw | Art. 23510210

PK Cat.6A iso U 6kV HF 2.0 m bw | Art. 23510220



With a maximum data rate of 10 Gbit/s and PoE++ suitability up to 90 W, the ClassEA universal connector is the ideal solution for connecting and extending cable runs indoors. Thanks to its compact housing, the connector can be used in almost any installation environment. The connector can also be screwed directly onto mounting plates or similar using the two molded mounting lugs.

Class EA-Verbinder  
Art. 13900331



Key facts

- for all current applications up to 10 Gbit/s
- Full PoE++ capability up to 90 W
- Short and compact design
- for rigid conductors (AWG26/1-22/1) and flexible conductors (AWG24/7-22/7)
- molded mounting lugs for screwing onto mounting plates or similar

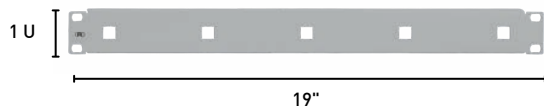
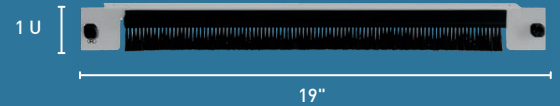
## Patch panel for patch cable management

On one height unit, the front recess provides sufficient space for the patch cables to be fed through to the rear into the interior of the enclosure.

To simplify patch cable threading, the brush strip can be removed even after the feed-through patch panel has been installed. The brush strip serves as dust protection and to prevent air exchange between the front and rear in air-conditioned enclosures.

PP-DF/1

Art. 23510010



In order to ensure clean patch cable routing in the front area of the 19" enclosure, appropriate cable routing aids are now mandatory. An unequipped base plate for 19" installation on a height unit can be fitted with various cable routing brackets to accommodate the patch cables. Different cabinet depths can be compensated for with the different versions of the brackets. These are available in the sizes 60 mm (black plastic version), 75 and 110 mm (chrome-plated metal brackets). The brackets can be easily replaced at a later date, even when installed. 5 brackets are required for each base plate.

Cable management patch panel for holding max. 5 cable brackets 19"/1 U  
PP-KF/1 | Art. 23510011

Cable management bracket made of metal or plastic

KFB 75 mm | Art. 23510012

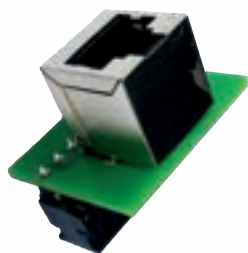
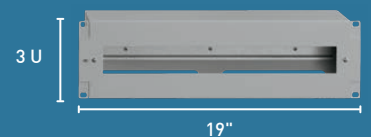
KFB 110 mm | Art. 23510013

KFB 60 mm | Art. 23510014

The REG patch panel is installed in a 19" rack on 3 height units. The front panel can be easily removed with two screws, providing access to a pre-assembled top-hat rail. The patch panel offers space for up to 22 subdivision units and thus enables the mounting of DRA patch panels, installation switches and other DRA devices. The openings at the top and bottom across the entire rear allow cables to be fed in easily from behind. Earthing studs are provided on the rear left or right side.

REG patch panel, 19" / 3 U, 22 HP with pre-mounted top-hat rail

PP-REG 22/3 | Art. 23510015



The SR 10TX GB and SR 10TX GB PoE installation switches are the ideal solution due to their size of just 8 sub-distribution units. They offer up to 10 network connections, 6 of which were previously connected directly via screw strips on the top and bottom. This design eliminates the need for an additional patch panel in the distribution board. With the RJ45 adapters in straight or angled design, these direct connections can now also be used in Plug & Play with patch cables.

RJ45 adapter for installation switches SR 10TX GB and SR 10TX GB PoE, for direct connection of patch cables to the data cable connections at the top and bottom of the switch

ADAP SR 10  
Art. 23510203

Winkel-ADAP SR 10  
Art. 23510204



## FTTH connection set

The FTTH connection set is a new, optimized version of the FTTH connection set already in our range. It is available in the proven lengths of 30/50/70 m. The ITU-T G.657 A2-compliant drop cable with a diameter of just 2.3 mm and 4 fibers is insensitive to bending radii and is ideal for longer pull-in distances in a 7 mm blow-in/pull-in conduit in the riser area of building cabling, e.g. in apartment buildings. The cable also has an increased fire protection class (B2ca) and is therefore not subject to any installation restrictions in public areas. The junction box offers a number of new functions, including the direct mounting of a gas blocker (7 mm), the option of keyhole mounting and cable feed from all four corners and from behind.

With a height of only 24 mm above the wall, it is one of the flattest solutions on the market. The integrated LC-D socket has automatic laser protection and can accommodate up to 4 couplers (LC-D/SC). The cover is prepared for individual labeling; corresponding labeling templates are available on our homepage.

### Key facts

- Connector assembly 1 x LC-D/APC
- 2 inserted spare fibers (blue/yellow)
- Accepts 1 microduct 7/4 incl. gas blocker
- For fiber optic cables up to 4.5 mm diameter
- Drop cable 4 x E9/125 G657 A2 with 2.3 mm diameter
- Protection class for wall mounting: IP50
- Fibers according to quality class Grade B
- Splice tray for up to 4 crimp or shrink splices

FTTH-Anschlussset 2,3mm 1xLC-D OS2 APC 30m  
Art. 228120030

FTTH-Anschlussset 2,3mm 1xLC-D OS2 APC 50m  
Art. 228120050

FTTH-Anschlussset 2,3mm 1xLC-D OS2 APC 70m  
Art. 228120070

## FTTH extension set

In many cases, a fiber optic connection in the house or apartment creates new installation challenges for the customer and the installer.

If there is no socket for the required fiber optic router or modem near the home handover point (WÜP), the fiber optic connection must be extended to the installation location of these active devices.

The FTTH extension set is mounted on the wall as a surface-mounted solution. The cable outlet can be selected at all four corners. A total of up to 20 m of cable is available in the housing, which can be used with an automatic winding and unwinding mechanism. On the other side, 1 m of cable is available for connection to the WÜP.

## FTTH-Verlängerungsset LC OS2 APC 20m

Art. 228051720

### Key facts

- Pre-assembled cable on both sides for extending the FTTH connection
- Wall mounting, cable outlet possible at all 4 corners
- Drop cable 1 x E9/125 G657 A2, 1.6 mm diameter, LSZH
- for indoor applications
- Fibers correspond to quality class Grade B
- Connection length to TA: 20 m (LC/APC)
- Connection length to the handover point (WÜP): 1 m (LC/APC)





DisplayPort connection box, with cable whip and DisplayPort socket on both sides, flush-mounted, suitable for TAE design covers from the switch industry, new in gray (RAL 7005)

KM-DP KP Up 0 g  
Art. 17010560

#### Key facts

- DisplayPort 1.4 socket
- Cable whip 15 cm
- Break-off support ring for bar version
- metric screws for centerpieces
- Suitable for TAE design covers from the switch industry

With the new high quality versions of the BNC-F keystones, Rutenbeck meets the higher requirements of broadband providers in terms of better attenuation behavior and higher quality materials.

KMK-BNC-F HQ, Keystone, F-socket, High Quality

#### Variants

KMK-BNC-F HQ rw KMK-BNC-F HQ sw  
Art. 17010656 Art. 17010666



#### Keyfacts

- BNC-F Keystone (female/female)
- Inner conductor made of beryllium-copper alloy
- Fits into standard keystone openings
- High protection against environmental influences
- Screw connection / feed-through socket



With the new version with a 3-pin screw terminal strip on the rear, the new mini jack keystone module now offers a simple option for installing a mini jack connection without the need for a soldered connection. Suitable for all standard Keystone mounts, the Keystone module can be integrated in almost all installation situations and is completely design-compatible with the TAE covers of switch manufacturers with the matching flush-mounted mounting adapter.

#### Key facts

- Mini jack keystone
- for stereo applications
- 3-pin screw plug connection for conductors up to 1.5 mm diameter

#### Variants

KMK-MK rw  
Art. 17010654  
  
KMK-MK sw  
Art. 17010664



⟨R⟩ **RUTENBECK**

Worldwide app access through free and data protection-compliant Rutenbeck Cloud

Now available:



Apple Appstore:



Google Playstore:

